



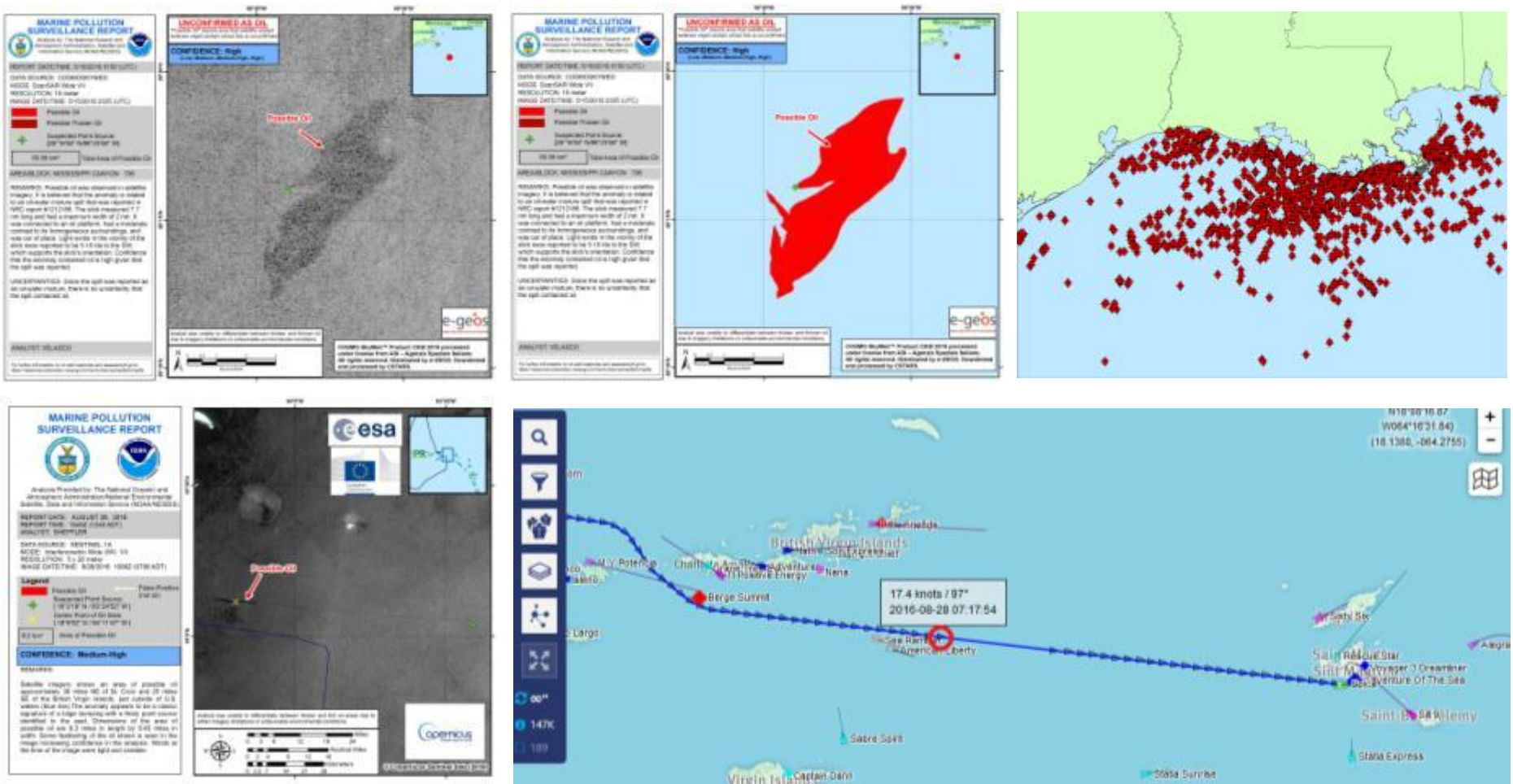
THE NINTH ORDINARY MEETING  
OF THE RAC/REMPEITC-CARIBE STEERING COMMITTEE

## NOAA Satellite and Information Service, Satellite Analysis Branch

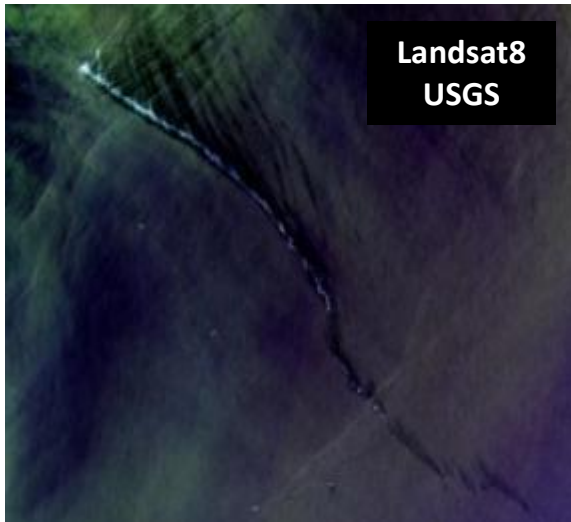
- “ In 2009 a formal request was made by NOAA’s Office of Response and Restoration for satellite support of oil spill emergencies and for assistance in monitoring intentional and accidental crude oil discharges in U.S. waters
- “ Oil Spill desk became fully operational in 2011 and is staffed 24x7x365
- “ A Marine Pollution Surveillance Report (MPSR) is generated for each anomaly detected in satellite imagery that’s believed to be non natural oil
  - . Multispectral imagery: Landsat 7/8, Sentinel 2a/b, MODIS Terra/Aqua, NPP VIIRS
  - . Synthetic Aperture Radar: Sentinel 1a/b, Radarsat 2
- “ Customers/users include the **U.S. Coast Guard, NOAA/ National Ocean Service, the Bureau of Safety and Environmental Enforcement, the Environmental Protection Agency, and State Agencies (e.g. Florida Fish and Wildlife, Texas General Land Office)**
- “ As of 1 March 2018, MPSRs are published to the web and publicly available.
- “ [www.ospo.noaa.gov/Products/ocean/marinepollution/](http://www.ospo.noaa.gov/Products/ocean/marinepollution/)

## THE NINTH ORDINARY MEETING OF THE RAC/REMPEITC-CARIBE STEERING COMMITTEE

“ Produce approximately 200 MPSRs each year ○ 2 JPEG maps, text metadata file, KMZ, GIS files



**THE NINTH ORDINARY MEETING  
OF THE RAC/REMPEITC-CARIBE STEERING COMMITTEE**



**Landsat8  
USGS**



**TerraSarX  
Germany**



**Sentinel2  
Europe**



**MARINE POLLUTION SURVEILLANCE REPORT**  
Submitted by the United States Coast Guard

**REPORT DATE/TIME: 05/05/19 08:00Z**  
DATE RECEIVED: 05/05/19 08:00Z  
REPORT: 05/05/19 08:00Z  
INCIDENT: 05/05/19 08:00Z  
SOURCE: 05/05/19 08:00Z

**CONFIDENCE: High**  
Location: 34° 42' N, 118° 00' W

**DESCRIPTION:**  
Presence of oil observed in satellite imagery. This anomaly is unconfirmed as of the date reported. It is a high confidence level. The anomaly is a dark, irregularly shaped area. The anomaly is approximately 11.0 km in length and 1.0 km in width. The anomaly is located in the western North Pacific Ocean. The anomaly is located in the western North Pacific Ocean. The anomaly is located in the western North Pacific Ocean.

**UNCERTAINTIES:**  
Given that this is a report from a satellite, the anomaly was observed at a high confidence level. While the satellite provides the location of the anomaly, the exact location of the anomaly is not known. The anomaly is located in the western North Pacific Ocean. The anomaly is located in the western North Pacific Ocean. The anomaly is located in the western North Pacific Ocean.

**SAFETY HAZARD:**  
None

**Joseph M. Cudahy  
American Steam tanker**



Photo courtesy of the Maritime Museum, Newport News VA

<b>Name</b>	<b>Joseph M. Cudahy</b>
<b>Type</b>	Steam tanker
<b>Tonnage</b>	6,950 tons
<b>Completed</b>	1921 - Sun Shipbuilding Co, Chester PA
<b>Owner</b>	Sinclair Refining Co, New York
<b>Homeport</b>	Wilmington
<b>Date of attack</b>	5 May 1942
<b>Nationality</b>	 American





**THE NINTH ORDINARY MEETING  
OF THE RAC/REMPEITC-CARIBE STEERING COMMITTEE**

- “ NOAA can most likely support international oil spill emergencies when requests are routed through the Office of Response and Restoration
- “ Under a MOA/U, NOAA can assist/train other countries to perform oil spill monitoring in their waters using optical imagery and synthetic aperture radar
- “ Approximately 90% of the imagery sources used to produce MPSRs are open and available on the web
- “ Image analysis and report creation are completed in ArcGIS



**THE NINTH ORDINARY MEETING  
OF THE RAC/REMPEITC-CARIBE STEERING COMMITTEE**

” Action: Discussions on possible collaborative activity.